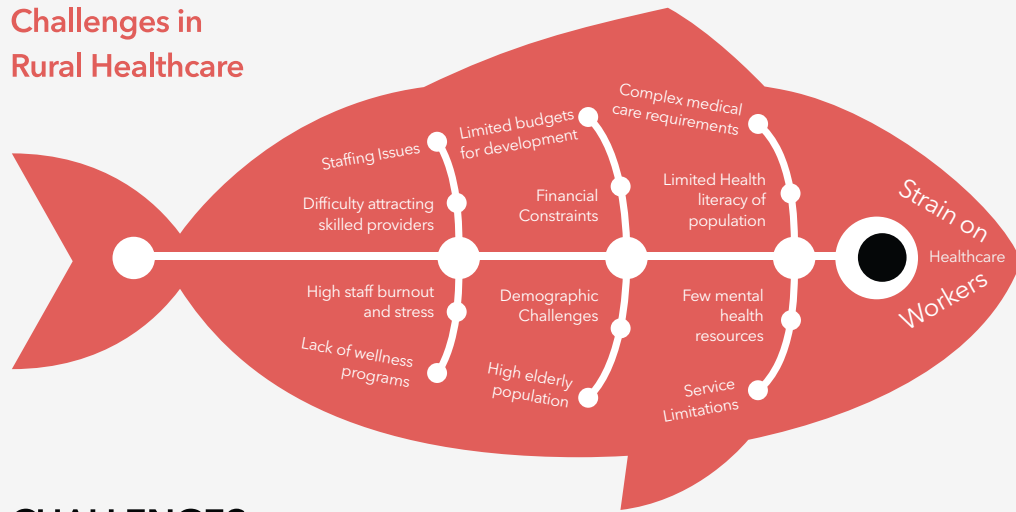


ABOUT KCHC



Keokuk County Hospital & Clinics is a trusted healthcare provider dedicated to serving the residents of Keokuk County and surrounding areas. With a commitment to compassionate, high-quality care, they offer a wide range of services, including primary care, emergency care, specialty clinics, and advanced diagnostics.

Challenges in Rural Healthcare

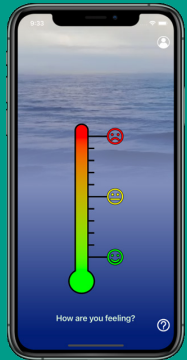
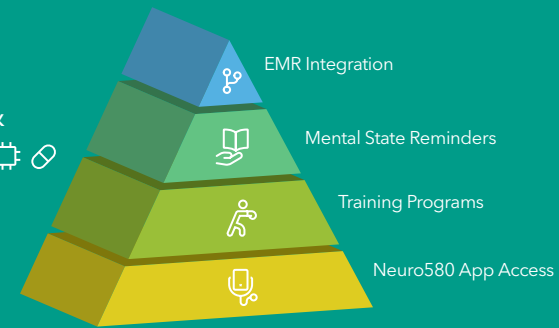


CHALLENGES

- **Limited Staff:** Difficulty attracting and retaining skilled healthcare providers, including physicians, nurses, and specialists.
- **Burnout:** High workloads and stress among staff due to the small workforce and broad scope of responsibilities. Lack of sleep is common with healthcare workers
- **Financial Limitations:** Limited budgets hinder investments in continuous professional development and wellness programs for staff.
- **Aging Population:** Rural areas have higher proportions of elderly residents, who often require more complex and frequent medical care.
- **Health Literacy:** High poverty levels and Lower health literacy levels among rural populations impact preventive care and treatment adherence, impacting healthcare worker stress
- **Limited Mental Health Services:** Few rural hospitals have dedicated resources for mental health or addiction treatment.

Enhancing Healthcare with Neuro580 and TruBridge

Neuro580 & TruBridge Partnership



SOLUTION

1. Neuro580 & TruBridge Strategic Partnership

ABOUT TruBridge: TruBridge®

TruBridge is a healthcare solutions company specializing in EMR software improving workflows, and supporting patient care, particularly for hospitals, clinics, and other healthcare facilities in rural areas.

2. Integration of the Neuro580 Brain Thermometer directing into the EMR. The Thermometer shows up at key points when healthcare workers login (eg first time login, last time login and intermittently) as a reminder to access a Neurohack to provide a cognitive break during the shift.
3. Posters in break rooms and Brain Thermometers magnets were placed outside patient rooms as reminders for caregivers to check their mental state frequently and before engaging with patients.
4. Onsite training for all staff, online training for families of staff, and access to Neuro580 App.



Neurohacks Implementation

Daily Utility

Integrating neurohacks into daily routines for overall well-being



Family Teaching

Teaching neurohacks to family members for shared benefits



Personal Use

Utilizing neurohacks for personal energy and focus management



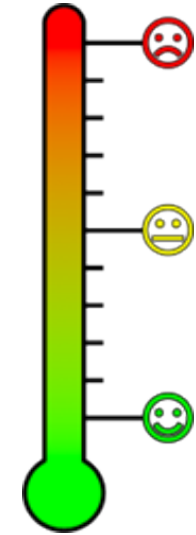
Stress Reduction

Using neurohacks to manage stress and emotional responses



Patient Interaction

Applying neurohacks in patient care and education



FEEDBACK

1. "Excited to implement neurohacks into days. Eager to teach my husband and kids"
2. "This will help decrease stress and spikes of yellow/red - RN"
3. "I see how this can be beneficial to my family also- RN"
4. "Can do with patients, after patients and can teach patients - RN"
5. "I can use these neurohacks when I get tired - RN"
6. "These are very useful throughout the day - RN"



One of our core values at TruBridge is PeopleFirst, this includes our team members, clients and the patients they serve. Our clients serve their community healthcare needs bravely and with compassion. Their wellness is equally important and partnering with Neuro580 is a way for us to give self-empowering tools through our EHR for self-care. Chris Fowler, **CEO, TruBridge.**